

# CERTIFICATE OF LOCATION OF GOVERNMENT CORNER

South 1/4 of Section 24, Township 107N, Range 41W, 5th P.M.

STATE OF MINNESOTA, County of Murray

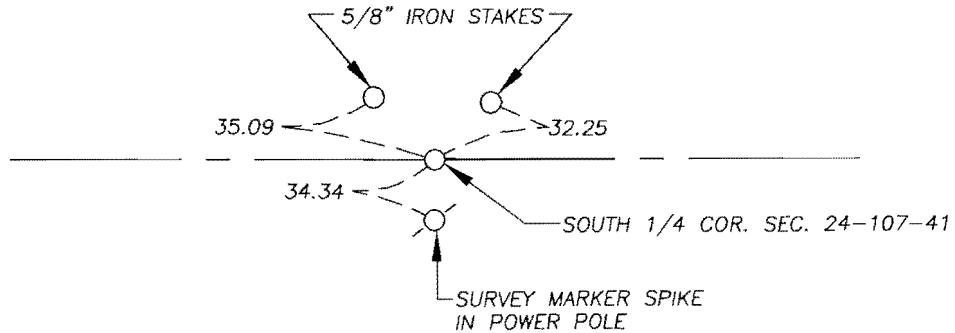
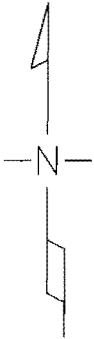
At the corner location shown on the sketch

On 9/30/08 found 5/8" Iron Stake

left monument as found     lowered monument,     removed monument (explain)

On 10/06/08 placed a 1" iron pipe with yellow plastic survey cap number 23008

## SKETCH OF REFERENCE TIES



S 1/4 COR. COORDINATES  
174015.34 N  
514013.49 E  
MURRAY COUNTY COORDINATES  
NAD 83 (2007)

I hereby certify that this document and the data contained herein was prepared by me or under my direct supervision.

Larry L. Gieske  
SIGNATURE

10-23-08  
DATE

MN. LICENSE NO. 23008

Land Surveyor,     Professional Engineer

County Surveyor,     County Engineer

OFFICE OF THE COUNTY RECORDER

I hereby certify that this document was filed in the Co. Recorder's Office at \_\_\_\_\_ on the

\_\_\_\_\_ day of OCT 28 2008

County Recorder James V. Johnson

By \_\_\_\_\_, Deputy

DOCUMENT NO. \_\_\_\_\_

**Statement of Evidence**

**Original Township Plat indicated the subdivision was surveyed by G.M. Fletcher with date of contract of July 11<sup>th</sup> 1861.**

**Murray County Highway Department had no information on this corner.**

**On 9/13/2008 we found a 5/8" Iron Stake. We removed stake and dug 10' X 20' X 4.5' deep hole with backhoe and found nothing. We placed 1" iron pipe with yellow plastic survey cap number 23008 at the location of the 5/8" Iron Stake.**



*Perry L. Zieske*  
10-23-08